

# Truman PDR:

## Physical Detection & Response

### The Challenge:

Risk in the modern security landscape is interconnected. Physical security breaches can quickly escalate into a digital crisis. Cyber-physical attacks, insider threats, and complex events exploit these interdependencies. A Physical Detection and Response (PDR) platform that unifies physical security, IT, IoT, and OT systems is crucial for managing this complex risk environment.

- **Limited Visibility:** Separate systems and data create gaps in understanding, making it hard to detect and respond to threats effectively.
- **Slow Response:** Manual processes and a lack of real-time information delay incident response, increasing risk.
- **Information Overload:** Too many alerts from disparate systems can lead to missed critical events and inefficient security operations.

### The Solution:

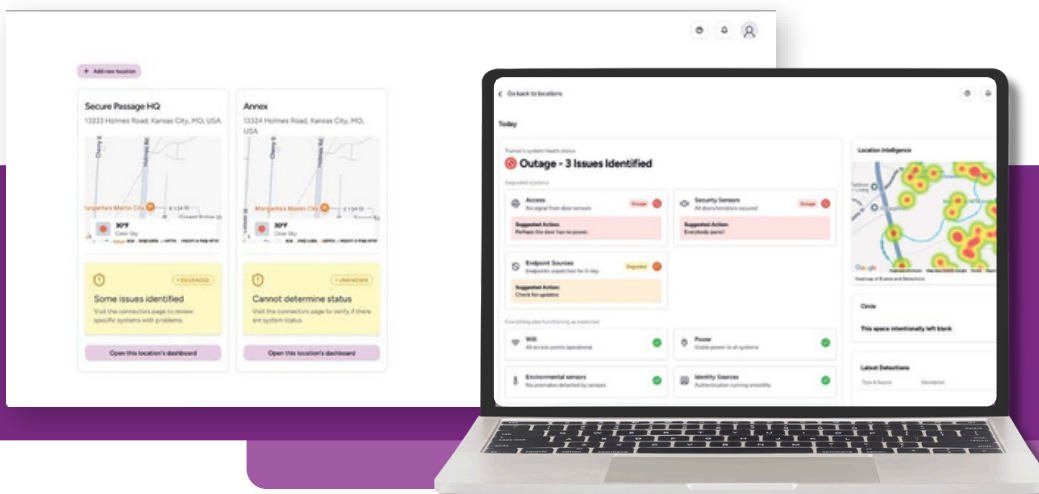
The **Truman Physical Detection & Response Platform** helps organizations overcome these challenges by bringing together physical and digital security data into a single, actionable platform. Truman provides the tools to detect, analyze, and respond to threats in real-time, improving your overall security.

### Key Features:

- **Centralized Data:** Integrate data from all your security systems, including access control, video surveillance, threat intelligence, IT networks, IoT devices, and OT systems.
- **Automated Incident Response:** Set up automated actions based on pre-defined rules and threat intelligence to speed up response times and minimize disruption.
- **Real-Time Insights:** Get a complete view of your security situation through interactive dashboards, maps, and customizable alerts.
- **Simplified Investigations:** Streamline investigations with powerful search and analysis tools, including video analytics and event correlation.

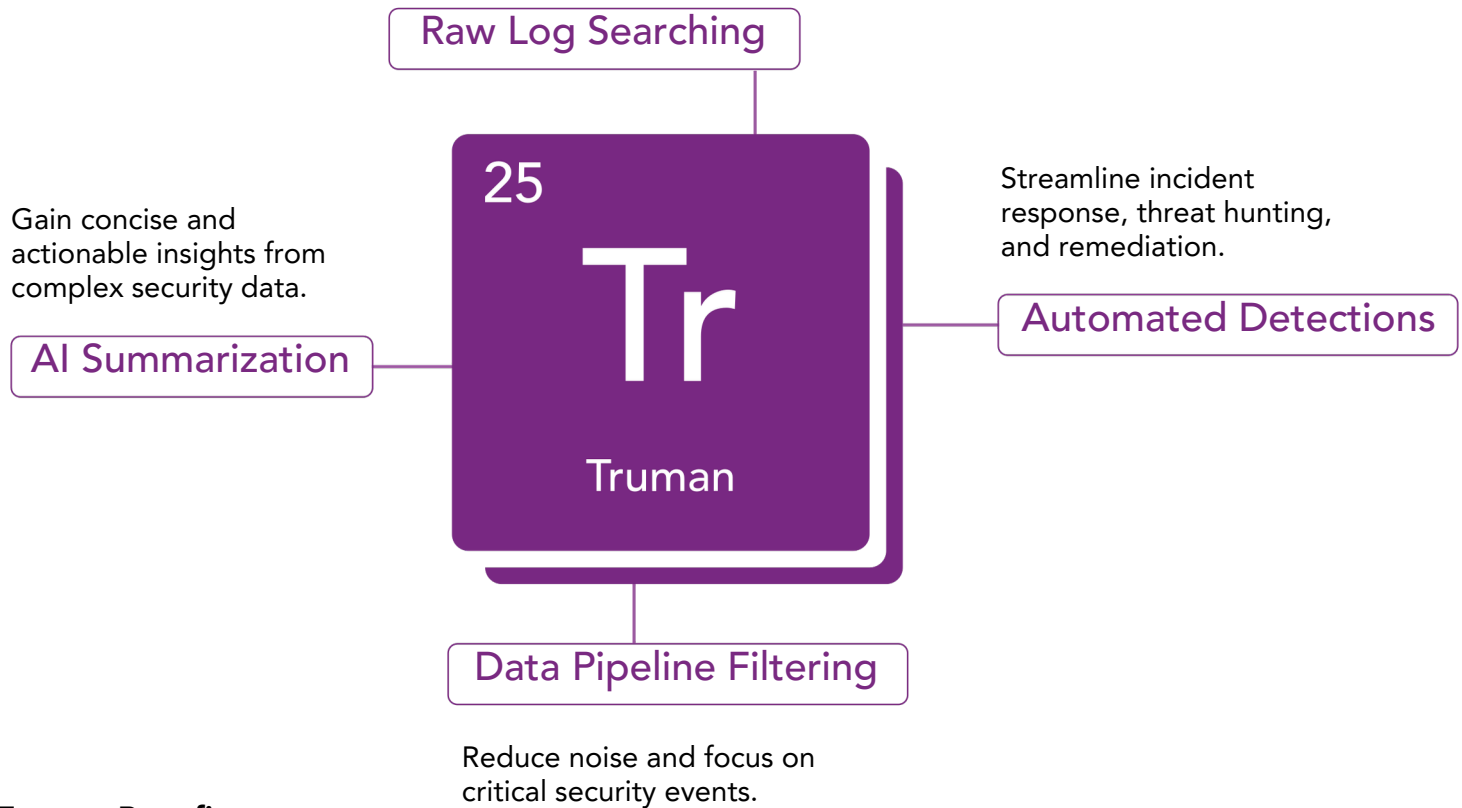
### What is PDR?

The fusion of traditional physical security—cameras, access controls, and sensors—with digital systems like AI-driven analytics creates a more cohesive and proactive defense. This integration enables real-time threat detection (e.g., unauthorized entry, suspicious behavior) and swift, data-driven responses.



## Key Features:

Dive deep into security incidents with powerful search and analysis capabilities



### Truman Benefits:

The Truman PDR solution enables organizations to:

- **Reduce Risk:** Proactively identify and address potential threats before they impact operations.
- **Optimize Resources:** Improve security operations, make incident response more efficient, and reduce manual work.
- **Improve Situational Awareness:** Understand security events and their potential impact in real time.
- **Strengthen Compliance:** Meet regulatory requirements and industry best practices for physical security and data protection.

### Truman Delivers:

- Reduced Alert Fatigue
- Faster Incident Response
- Improved Threat Detection
- Enhanced Security Posture
- Lower Operational Costs

**Ready to take control of your security operations? Request a demo today!**

**Visit:**

[securepassage.com/truman](https://securepassage.com/truman)

**Secure Passage** is committed to safeguarding what matters most: Humans. Our comprehensive security ecosystem includes the **Truman Physical Detection & Response Platform** for proactive risk management, the **Haystax Operational Intelligence Center** for organization and community safety, and **Strategic Services** to address diverse security needs. By delivering cutting-edge security solutions, Secure Passage continues to build trust and resilience within cities and communities across the country.